

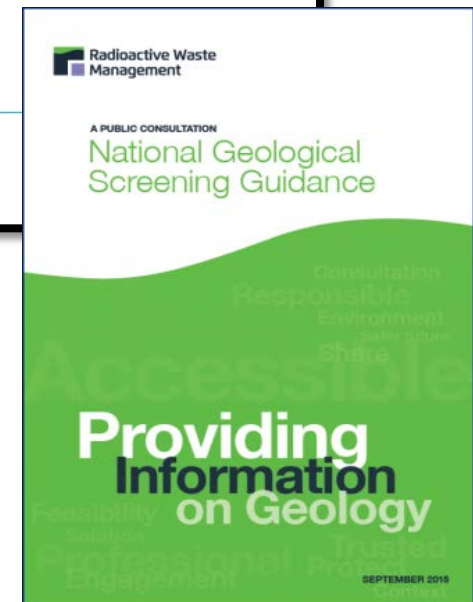
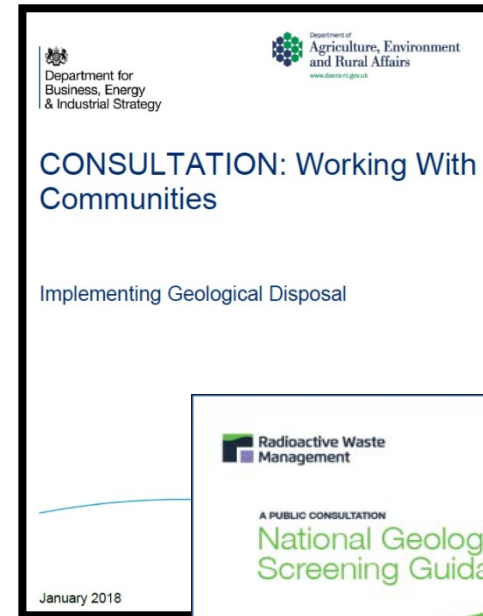
# Preparation for Site Characterisation

Radioactive Waste Management, UK

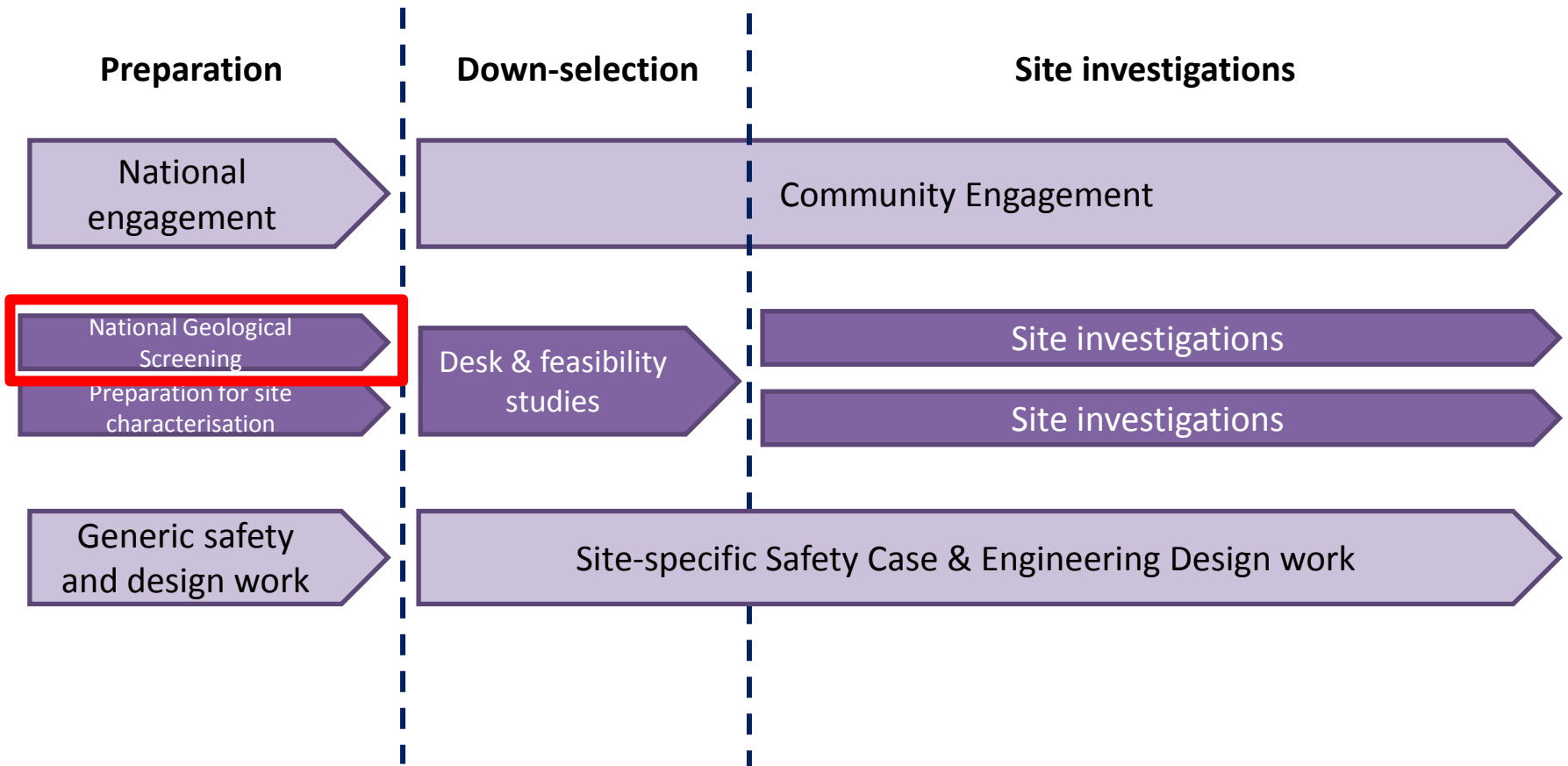
Rob McLaverty  
Geological Investigations Manager  
03/12/2018

# Current Status of the UK Programme

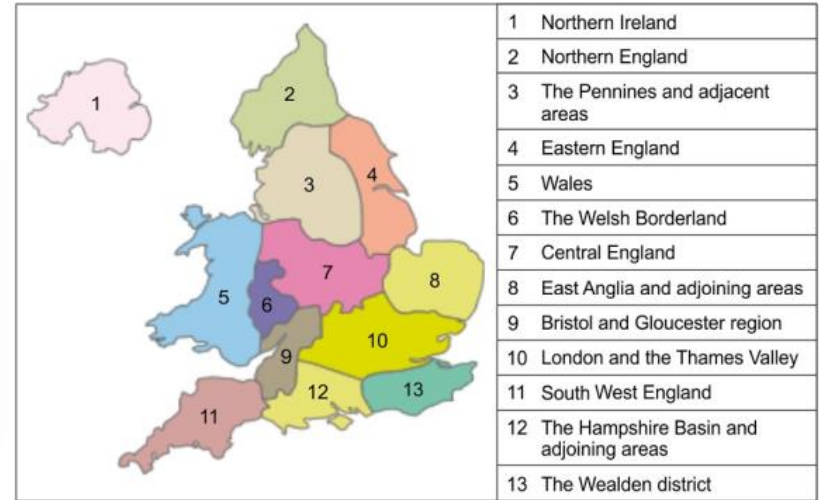
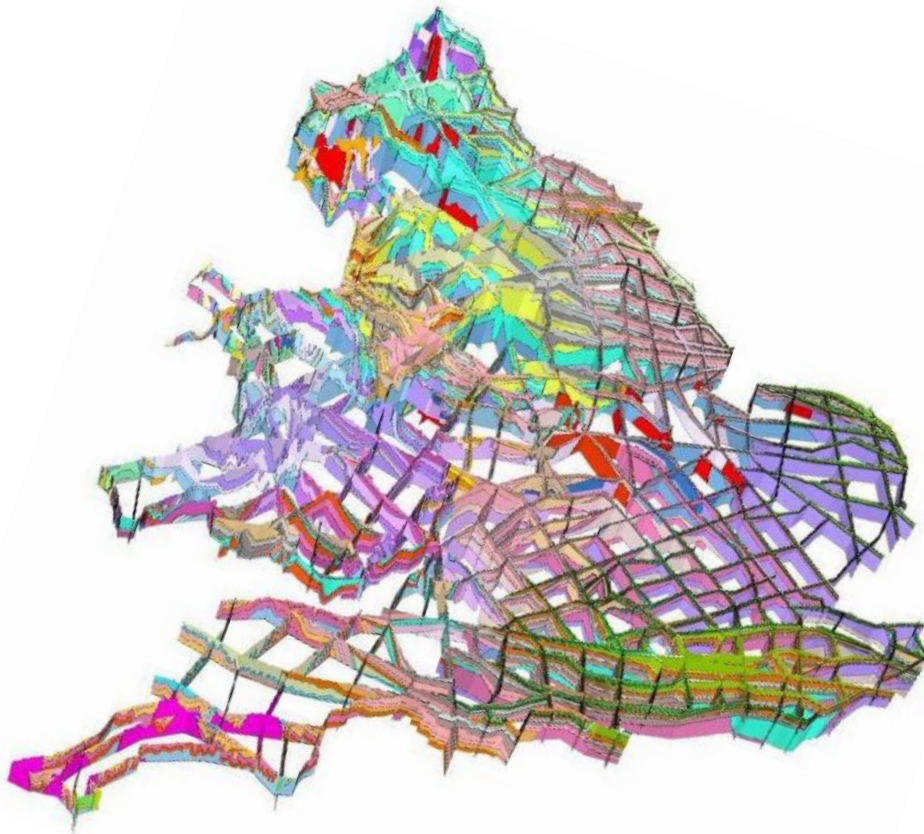
- Initial actions based on 2014 Government Policy
  - national geological screening
  - clarity on how to work with communities
  - amendments to national land-use planning
- Based on communities willingness to participate
- Following completion of these initial actions the siting process will begin



# Site Characterisation – project stages



# National Geological Screening



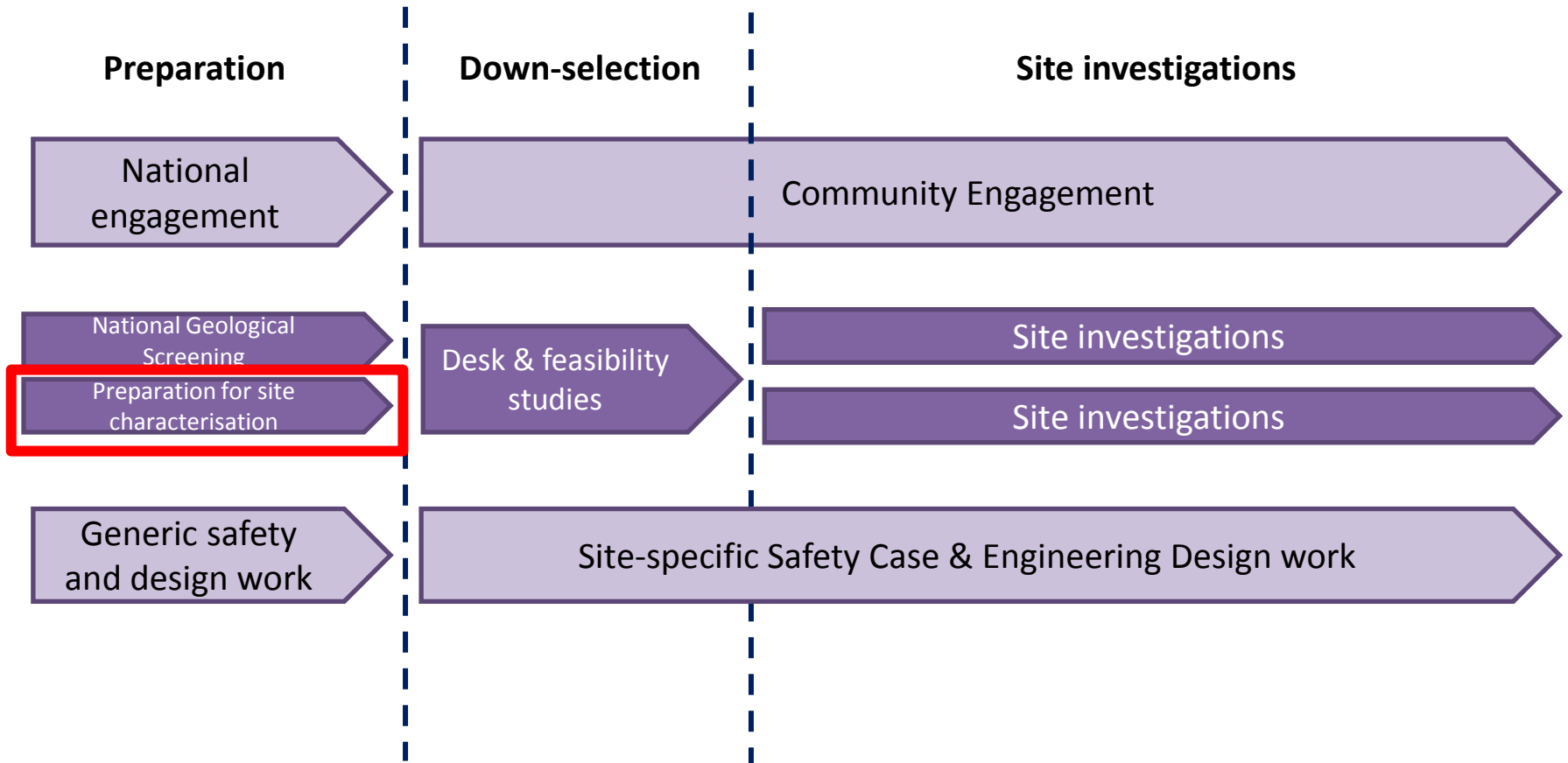
2729-01-NDA/BGS



# National Geological Screening



# Site Characterisation – project stages



# Site Characterisation Objectives

1. Provide the necessary geoscientific data at up to two sites, to satisfy the requirements of the design, safety case and environmental assessment teams
2. Make a recommendation on which sites to take forward into the construction phase
3. Ensure communities remain engaged in the process and demonstrate a positive test of public support

# Needs-driven Site Characterisation Requirements

- RWM uses requirements management to develop a **needs driven** site characterisation programme
- Information requirements are set out for:
  - Safety Case
  - Design
  - Environmental Assessment
- Aim is to ensure that the information gathered is focused in relation to its end use

## Geological Disposal

---

Safety Case Information Requirements from the RWMD Site Characterisation Programme

---

July 2013

## Geological Disposal

---

Design Information Requirements from the RWMD Site Characterisation Programme

---

July 2013

## Geological Disposal

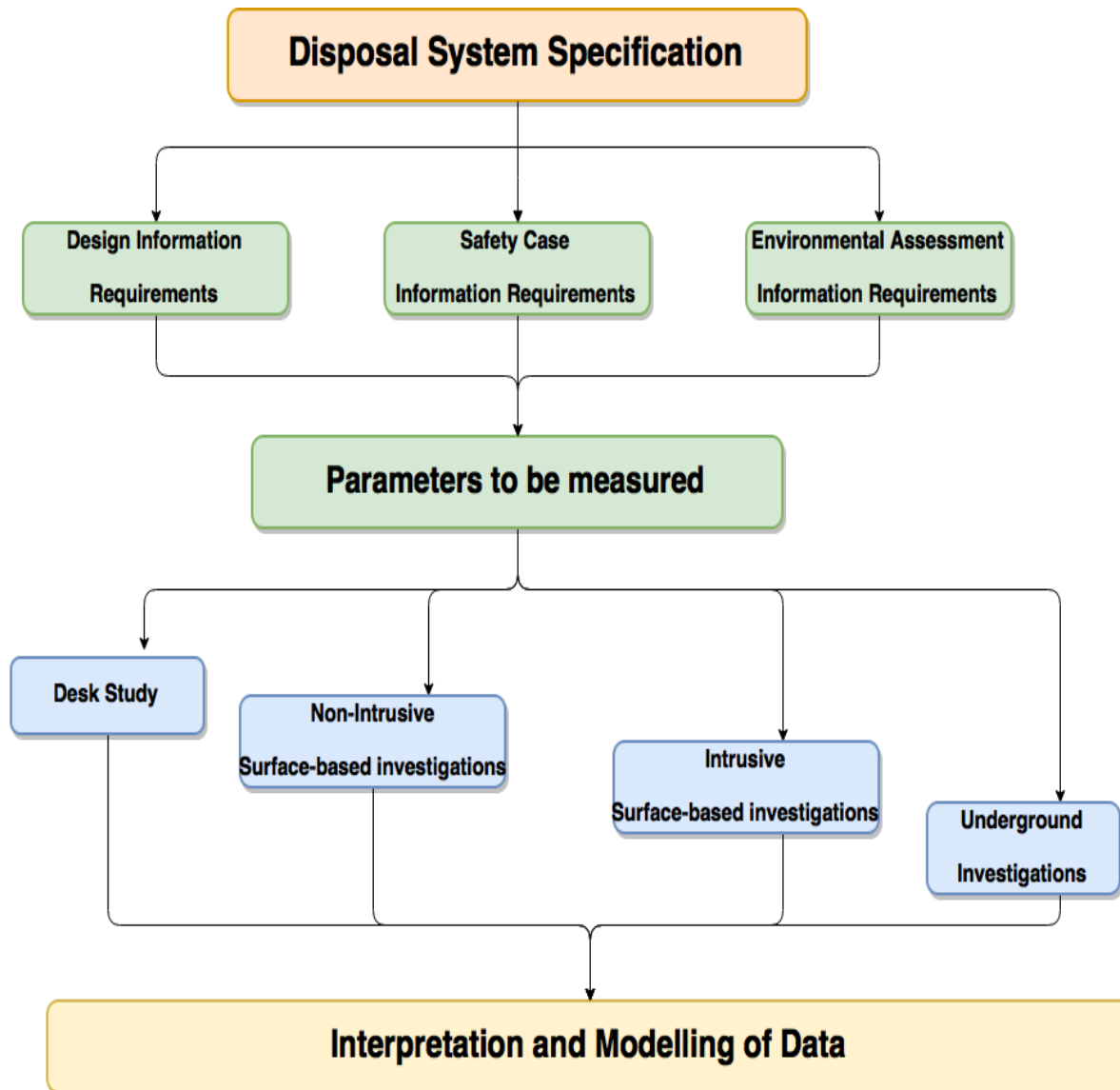
---

Environmental Assessment Information Requirements from the RWMD Site Characterisation Programme

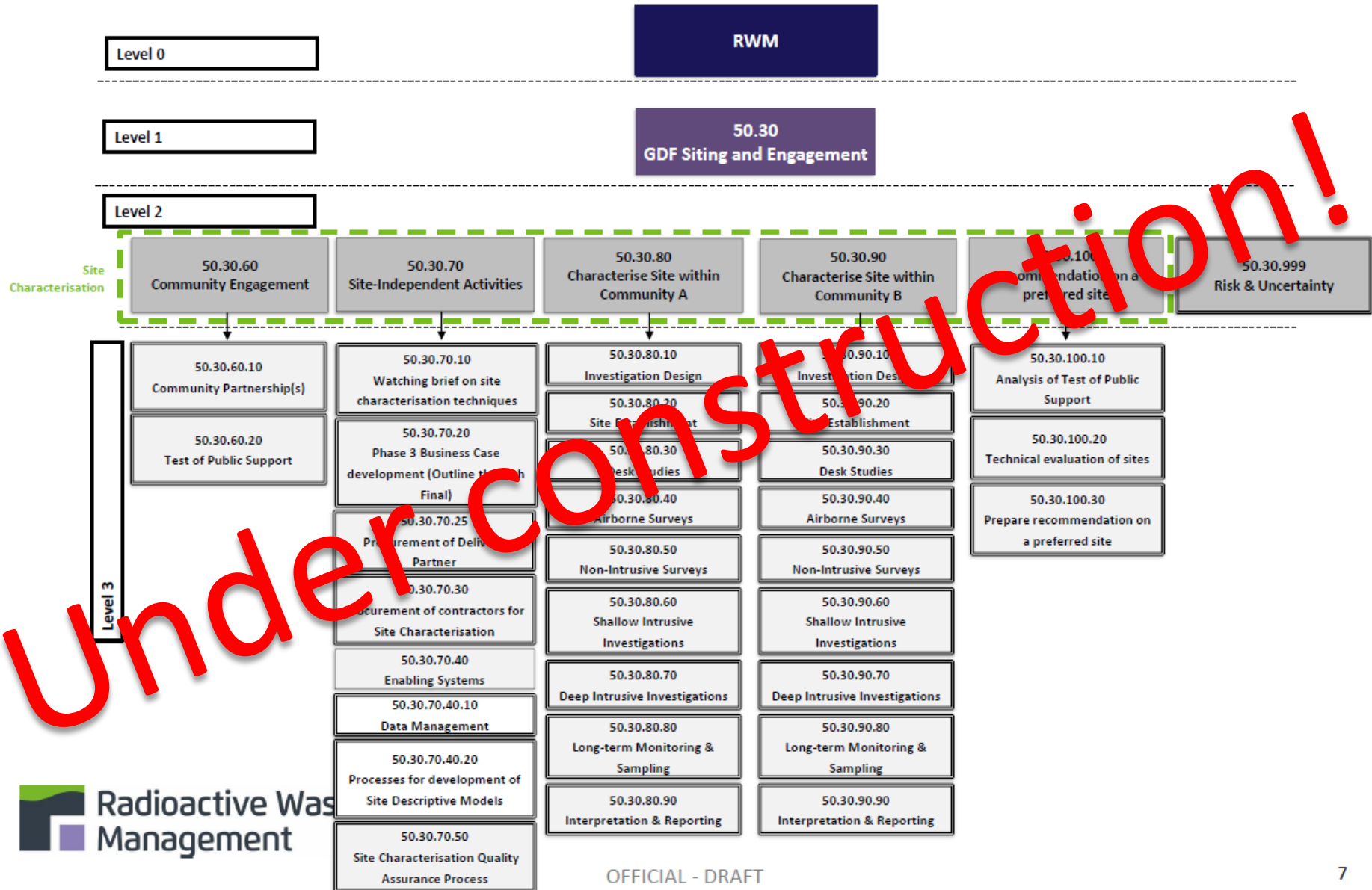
---

July 2013





# Developing a Work Breakdown Structure



# Planning for different scenarios

High Strength Rocks



Clay-rich Rocks

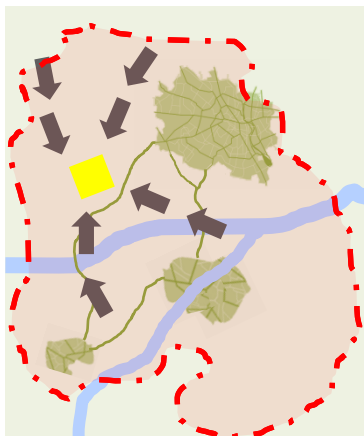


Halite

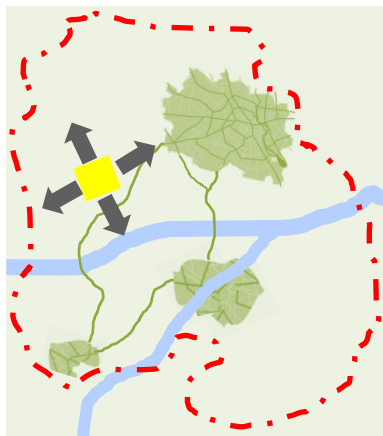


# Planning for different scenarios

## Onshore



Large area investigated within community

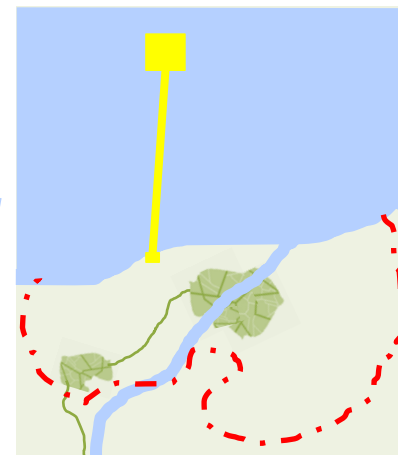


Small area investigated within community

## Coastal / Inshore



Investigation for facility is close to the shore



Investigation for facility is between 10 & 20km from the coast

# Next steps

- Develop costs and schedules for different geological and geographical scenarios to understand the implications on the site characterisation programme
- Raise awareness of the National Geological Screening outputs to provide the public with information about geology in their area
- Engage with communities following launch of the siting process and evaluate potential sites